

**RANKED #1
FOR VALUE**



In an independent survey by SpaRetailer™ Magazine, Freeflow® Spas outranked more than a dozen participating hot tub brands to earn top honors for overall product value.

Freeflow Spas are rotationally molded using polyethylene resin which creates an extremely durable, unibody hot tub.

We use high quality, industry-proven components, such as the heater and jet pump, which can be found inside other more expensive hot tub brands.

Freeflow Spas are energy efficient and offer low monthly operating costs. Each hot tub features full foam insulation, to ensure minimal heat loss. We strive to keep the water temperature high, and your energy bill low!

Our hot tubs offer a great user experience, as well as tremendous value! Independently owned and operated hot tub retailers ranked Freeflow Spas #1 in Value within its class, because our hot tubs feature items commonly found in premium spas, such as digital controls, waterfalls, ice buckets and jets with stainless steel trim, all for a fraction of the price.

How do we do it? Rotationally molding hot tubs is more automated and less labor intensive than the process used for manufacturing traditional, acrylic hot tubs. The unibody structure of the hot tub also allows us to eliminate the heavy and expensive wooden substructure. These factors result in a more affordable hot tub.

Purchasing a hot tub from a TradeCertified manufacturer, like Freeflow Spas, means your local retailer has selected one of the most reputable spa manufacturers in North America. You can rest assured knowing that you are getting the best performing hot tub within its class.

FREEFLOW SPAS®



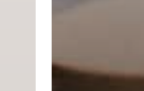
ALL MODELS INCLUDE:

- Unibody shell and cabinet for enhanced durability
- Full foam insulation for maximum energy efficiency
- 230v (2kw heater)
- 2.0 BHP Two-Speed Pump
- Multi Colour LED Light
- ASTM Approved Safety Cover with Locking Clips
- Intuitive Digital LED Controls

LIMITED WARRANTY:

See FreeflowSpas.com for details.

freeflowspas.com
facebook.com/freeflowspas



© 2015 Watkins Manufacturing Corporation. 1280 Park Center Drive, Vista, California 92081. Specifications, colours and surface materials are subject to change without notice. Not all features are available on all products. Printed in EU. Freeflow, Aptos, Mini, Excursion, Cascina, Tristar, Azure, Monterey are trademarks of Watkins Manufacturing Corporation. All 230v models must be installed by a licensed electrician in accordance with local codes.

FREEFLOW SPAS®



Made in USA

Affordable

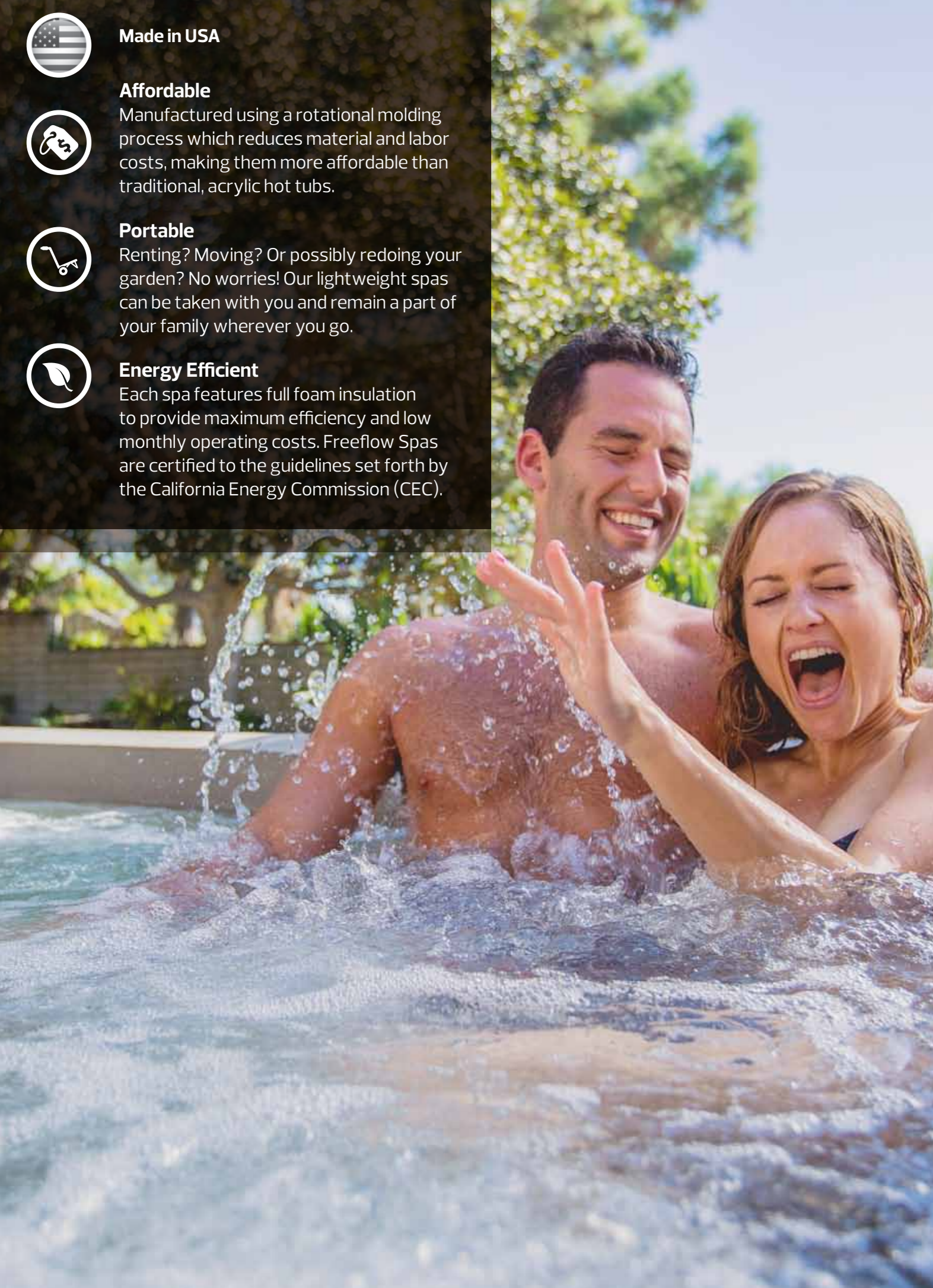
Manufactured using a rotational molding process which reduces material and labor costs, making them more affordable than traditional, acrylic hot tubs.

Portable

Renting? Moving? Or possibly redoing your garden? No worries! Our lightweight spas can be taken with you and remain a part of your family wherever you go.

Energy Efficient

Each spa features full foam insulation to provide maximum efficiency and low monthly operating costs. Freeflow Spas are certified to the guidelines set forth by the California Energy Commission (CEC).



All Spas Available In:

Sand



Taupe



Espresso



AZURE™

- Seats 4 Adults
- 18 Jets
- 946 Litres
- 152 Kg (Dry Weight)
- 206 x 160 x 84 cm



MINI™

- Seats 2 Adults
- 10 Jets
- 435 Litres
- 113 Kg (Dry Weight)
- 183 x 119 x 71 cm



APTOS™

- Seats 5 Adults
- 18 Jets
- 984 Litres
- 163 Kg (Dry Weight)
- 198 x 86 cm



CASCINA™

- Seats 4 Adults
- 17 Jets
- 814 Litres
- 125 Kg (Dry Weight)
- 157 x 178 x 81 cm



MONTEREY™

- Seats 7 Adults
- 22 Jets
- 1,230 Litres
- 171 Kg (Dry Weight)
- 221 x 196 x 86 cm



TRISTAR™

- Seats 3 Adults
- 17 Jets
- 776 Litres
- 137 Kg (Dry Weight)
- 183 x 183 x 79 cm



EXCURSION™

- Seats 5 Adults
- 25 Jets
- 965 Litres
- 202 Kg (Dry Weight)
- 196 x 218 x 84 cm

